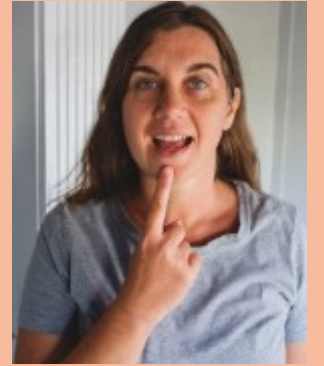


The Symbols in the Script



Point to your mouth

Pointing to your mouth helps the student focus on the sounds you are making. It also reminds you to be clear and consistent when producing words and sounds.



Expected student response

Pay close attention to these symbols signaling that it's the student's turn. This is key to releasing responsibility to the student and helping them gain independence.



Student makes a mistake

When your student makes a mistake, scroll down to see the best approach to correcting them. Remember that corrections never involve asking your student to guess.

